

LES TROIS GRACES



Trois Cavatines  
 DE  
 BELLINI, ROSSINI, DONIZETTI  
 Parées pour le  
 Piano Forte  
 & DEDIEES A  
 Miss Mariane Ellicel  
 PAR  
 HENRI HERZ.  
 N<sup>o</sup> 1. Cavatine du Pirate.  
 N<sup>o</sup> 2. Cavatine de Semiramis.  
 N<sup>o</sup> 3. Cavatine d'Anna Bolena.

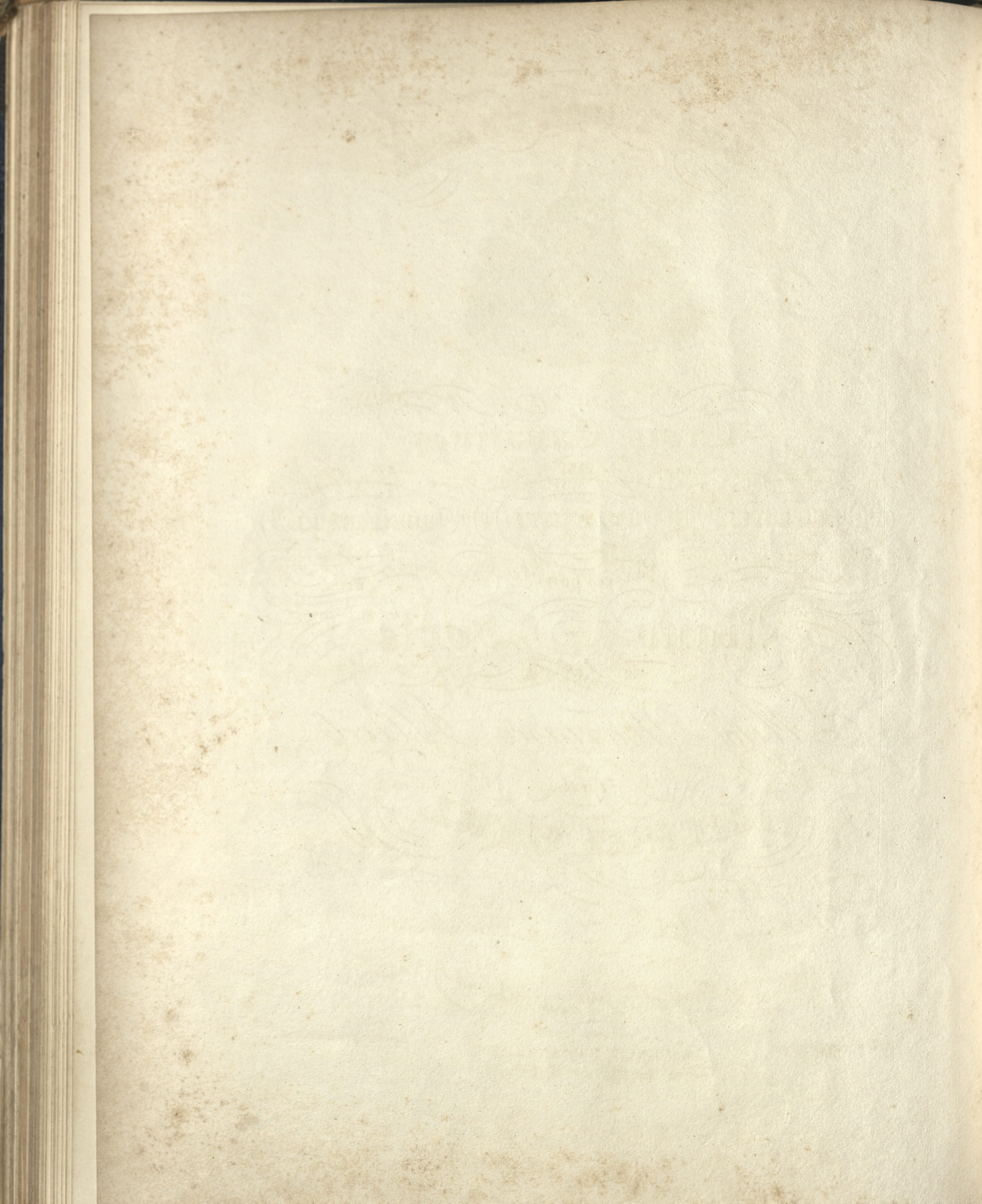
Paris, chez Aubignier.

Propriété des Editeurs.  
MAYENCE ET ANVERS  
chez les fils de B. Schott.

Londres, chez D'Almaine.













CAVATINE DE SEMIRAMIS.

H. HERZ Op. 68.  
N° 2.

Allegro moderato ♩ = 104. Ten.

INTRODUZIONE.

*f* Risolutc. Ped. Dolce. \* Sempre *f*

*p* con molto sentimento. Ped. Dolce. \* Ped. 3 3 \*

*sf* *p* *mf* Pesante. Dimin - - -

- cresc - Ped. - - dimin. *p* Delicatamente. *pp* Cres.

*mf* > Dimin. *pp* *p* Ped. \*



8va

*sf* Dimin. - rallent. - *mf* Ben marcato.

Ped. \*

*mf*

8va

*sf* Dimin. - *mf* Cres. -

Loco.

8va

*mf*

8va

*f* ritenuto. *f* Risoluto.

Ten.

Ped. \*

Ten.

*f*

Ten.

Cres. - Dolce. m.s. 8va

Ten.

Ped. m.d. *p* Legato.

Ten.

8va

Rallentando assai. - *p* Calando. \*

Loco.

tr.



Andantino  $\text{♩} = 126$ . Con espressione.

CAVATINE.

Musical notation for the first system of the Cavatine. It consists of a grand staff with a treble clef and a bass clef. The key signature has one sharp (F#) and the time signature is 6/8. The tempo is Andantino with a metronome marking of 126. The performance instruction is "Con espressione". The first system includes markings for "Ped." (pedal), "p" (piano), and "dolce." (dolce). There are asterisks (\*) above some notes in both staves.

Musical notation for the second system of the Cavatine. It continues the grand staff notation with "Ped." markings and asterisks (\*) above notes.

Musical notation for the third system of the Cavatine. It includes markings for "Ped.", "p", "Dimin." (diminuendo), "f" (forte), "ben marcato." (ben marcato), and "sf" (sforzando). The instruction "Espres." (Espressione) is also present.

Musical notation for the fourth system of the Cavatine. It includes markings for "p", "Dolce.", and "Ped.".

Musical notation for the fifth system of the Cavatine. It includes markings for "pp", "Cres." (crescendo), "f", "Sotto voce p", and "Ten." (tenuto).

Più mosso  $\text{♩} = 66$ .

1<sup>re</sup> Var.

p Leggiero assai.

Musical notation for the first variation. It consists of a grand staff with a treble clef and a bass clef. The key signature has one sharp (F#) and the time signature is 6/8. The tempo is Più mosso with a metronome marking of 66. The performance instruction is "Leggiero assai". The first system includes markings for "p" (piano) and "p" (piano). There are various fingerings and accents indicated above the notes.







Con espressione ma semplice ♩.=60.

2<sup>me</sup> Var.

Con agitazione. *p* *sf* *p*

Ped. \*

Cres. - agitato. - *f* Smorz. *p*

Ped. \*

Dim. *f* Con fuoco. *sf* *p*

Ped. \*

Poco ritenuto. - - - - - In tempo.

*mf* *p* Dimin. - *pp* Cantabile. *p*

Ped. \*

Con forza. *sf* *sf* Ten. *pp*

Ped. \* *f* *sf* *pp*

Con forza. *f* *sf* *pp*

*p*s.v. Ten. Dolce espress. *pp*

Brillante ♩.=58.

*p* Leggiero veloce. *p*

13 53

3<sup>me</sup> Var.



3 8va 21 Loco. 23 13

Rinf. p

3 13 f 1 p

8va Loco.

Cres - cen - do.

21 8va Loco.

Ped. \* Ped. Cres. - Ped. \* Ped. \*

21 8va Loco. 3

Leggiero. Ped \*

8va Loco. 3 1 5 2 4 2 1 3 2

Poco a poco più cres. -

Ped. \*

21 8va Loco. 8va 1a 2a

- sempre più forte -

f Ped. \*



Marcia ♩ = 126.

4<sup>me</sup> Var.

e  
FINALE.

*p* Sotto voce.

*p*

*f* Brillante. Ped. \*

*f* Forte sempre. Ped. \*

*f* e risoluto. Ped. \*

*p* Dolce. Ped. \*

3 3 13453

35 3454

5



*sf* Cres. *f* *sf>*

8<sup>va</sup> Loco. TRIO. *p* Delicato. \* FINE. *p*

8<sup>va</sup> Sempre piano. Ped. \*

8<sup>va</sup> Ped. \* Ped. \* Ped. \* Ped. \*

8<sup>va</sup> Loco. CODA. D.C. la Marcia senza repetitione e poi la Coda. Ped. \* Ped. \* Ped. \*



*Dolce.*

*Cres.* *dimin.* *Animato.* *pp* *Leggiero.*

*Marcato.* *Marcato.* *p* *Poco cres.*

*p* *Cres.* *dimin.*

*8va* *mf* *Ped.* *Marcato.* *Ped.*

*Marcato.* *p* *Poco cres.* *Molto crescendo.*



8va. ~~~~~ Loco.

*sf* Legato.

Ped. \*

8va. ~~~~~

*f* Ped. \*

Con fuoco ed animato.

8va. ~~~~~ Loco.

8va. ~~~~~ Loco.

Sempre forte.

8va. ~~~~~ Loco.

Ped.

91 52 15

*ff* Il più possibile.

*ff* \*

3729.2. FINE.